

# The Company Leader

Leadership Lessons from the Tactical Level of War

## TACTICAL DECISION GAMES

### Counter-Attack (SBCT PLT Attack)

---

The Company Leader TDG 19-05





# Counter-Attack

**TDG**

The war against Donovia to secure Atropian independence rages. Donovanian Forces launched another invasion into Atropia in early January in order to seize northern portions of Atropia. The Coalition response to the Donovanian invasion was swift and effective, resulting in significant attrition to the invading force. The most forward Donovanian elements, the 111<sup>th</sup> BTG, suffered a high casualty rate, as well as an 85%-90% attrition rate of armored vehicles. Your company will counter-attack along the international border and your platoon is the lead element.



**U.S. Soldier takes part in a training event, showcasing for the SECARMY the skills soldiers acquire at Fort Benning, GA. U.S. Army Photo by Patrick Albright.**

This is part of our Tactical Decision Game Series. There is no ONE right answer, but there are varying degrees of right and wrong. Feel free to post your answers in the comments, on Social Media, or submit to The Company Leader. For an aggregated list of TDGs click [HERE](#). To subscribe to The Company Leader click [HERE](#).





# Counter-Attack

TDG

## Situation

Donovian Forces withdrew behind the international boundary and occupied principle defensive positions along the border. Coalition Forces transitioned security for Atropia back to the Atropian Security Forces. Local Governance has moved back into city centers of Atropia and the legitimacy of GoRA is restored. The Coalition counter-attack begins.





# Counter-Attack

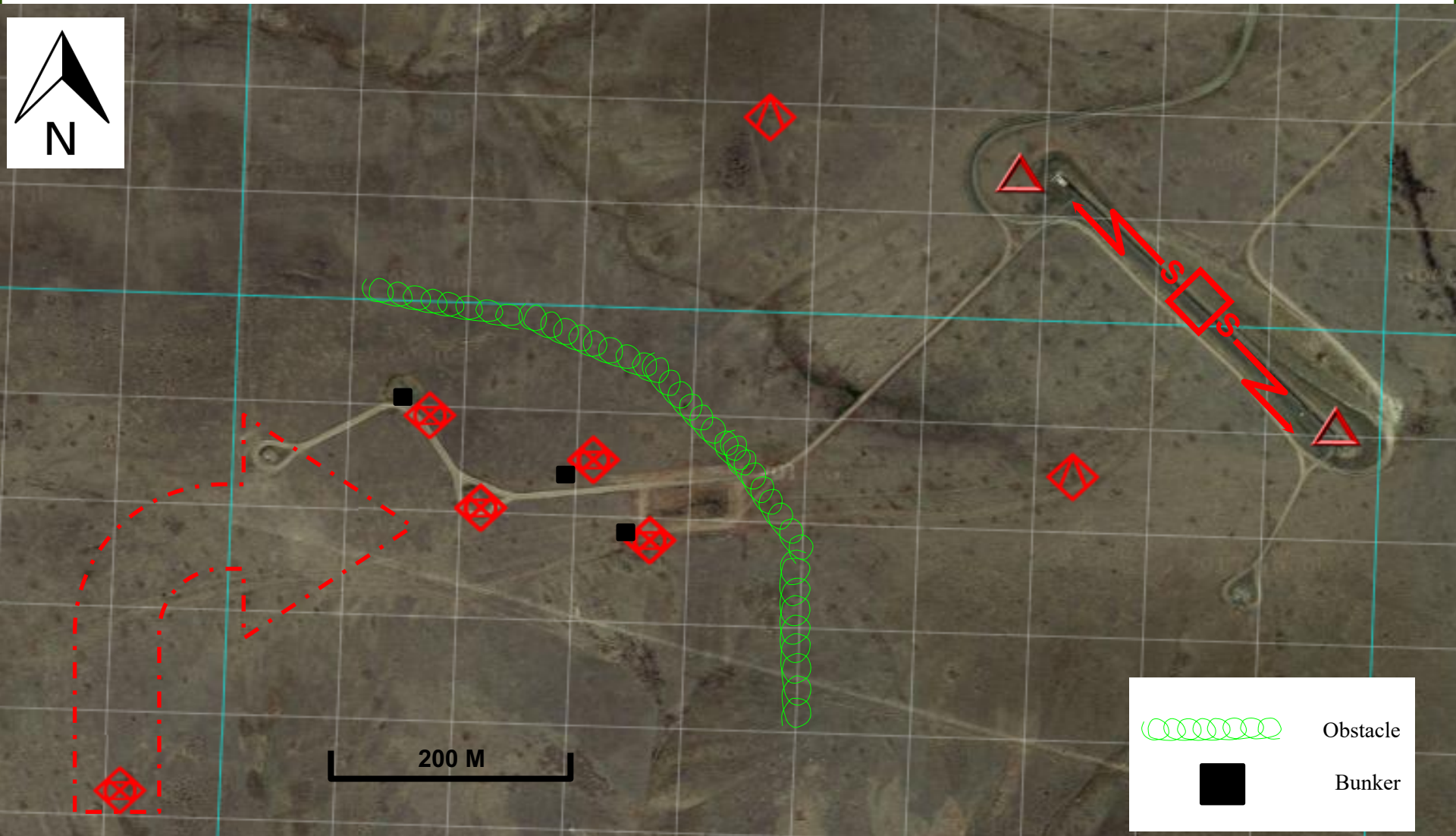
## Enemy

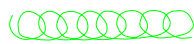

Enemy forces have established a hasty area defense facing north following the successful seizure of Atropian Border Security Complex (ABSC). ISR imagery indicates they are equipped with 2x BTR-80s that has 1x AT-14, 1x 30mm chain gun, and 1x 7.62 PKT machine gun. We believe these vehicles will be behind berms on the objective. The enemy has 2x dismounted squads, each equipped with 8x personnel, 1x RPG-29, 1x SA-18, 2x AGL, 2x light machine guns. The enemy will spread these forces on the objective in 3x bunker locations. Enemy reinforcements are approximately 10km southeast and are able to reinforce within 15 minutes.





# Counter-Attack



	Obstacle
	Bunker



# Counter-Attack



## Task Org

You are part of a battalion task force whose mission is to attack to destroy elements of the 111th Brigade Tactical Group (BTG) along the Atropian-Donovian International Border to deny enemy capabilities to re-invade Atropia, and to legitimize the Government of the Republic of Atropia (GoRA). Your company is conducting an attack to destroy principal defenses vicinity the company objective.

You at MTOE strength for an SBCT rifle platoon. Your company commander gave you tactical control of 1x MGS vehicle and 1x ATGM vehicle and priority for the company 60mm mortar team. You can pre-plan 2 x 60mm targets as well as 2x BN 81mm and 120mm targets. During Phase I of the company mission, you can call those pre-planned fires. You will also be able to call targets of opportunity for the company 60mm mortars to engage.





# Counter-Attack



## Mission

Your platoon (+) will attack to destroy enemy vicinity OBJ Aardvark IOT protect the company decisive operations eastern flank and deter further Donovanian aggression.



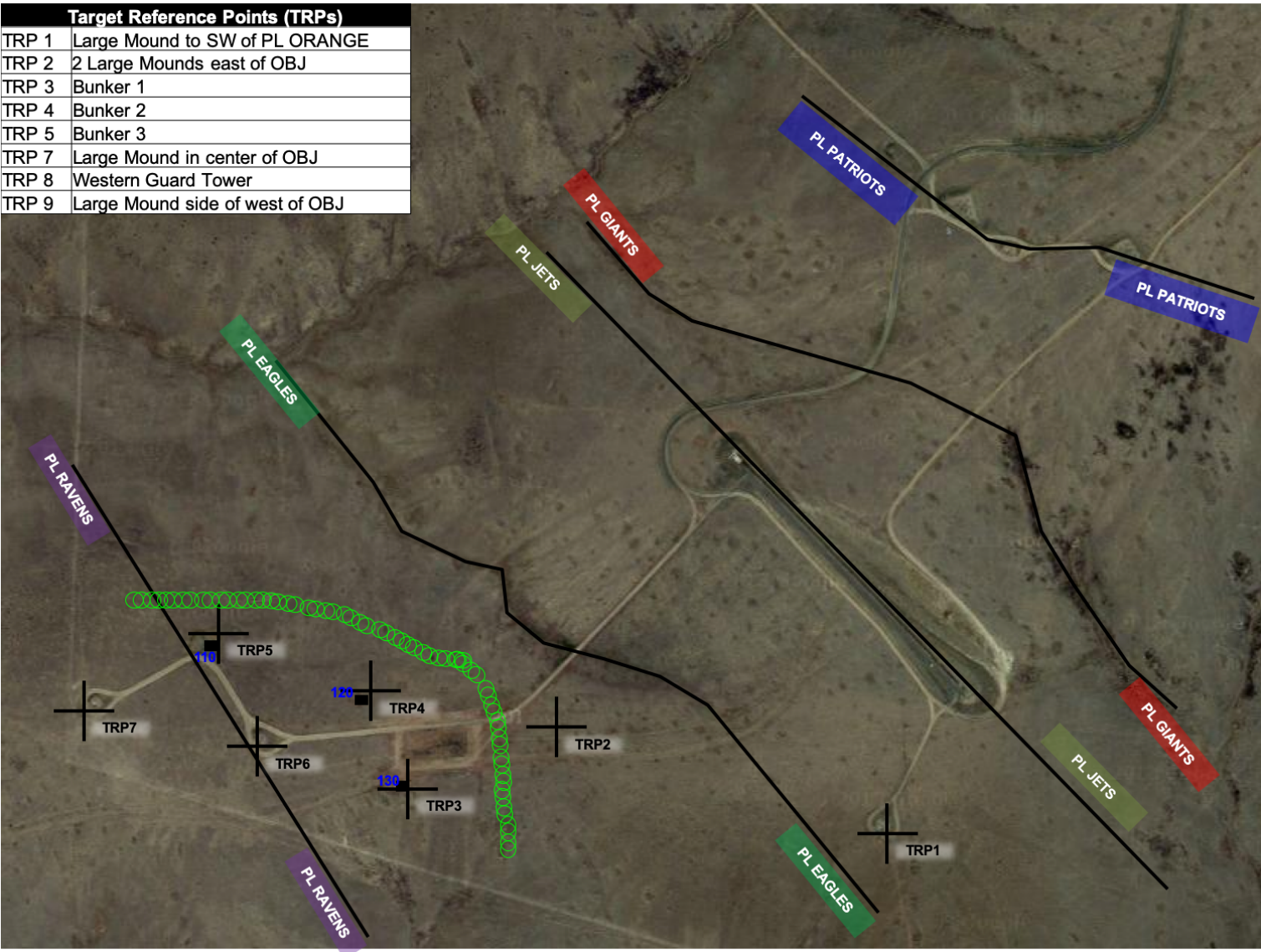
4<sup>th</sup> Battalion, 17<sup>th</sup> Infantry , 1<sup>st</sup> Stryker Brigade Combat Team, 1<sup>st</sup> Armored Division out of Fort Bliss, TX engaged enemy elements during Decisive Action Rotation 19-01 at the NTC, Oct. 1, 2018. U.S. Army Photo by Pvt. Brooke Davis, Operations Group, NTC



# Counter-Attack



Target Reference Points (TRPs)	
TRP 1	Large Mound to SW of PL ORANGE
TRP 2	2 Large Mounds east of OBJ
TRP 3	Bunker 1
TRP 4	Bunker 2
TRP 5	Bunker 3
TRP 7	Large Mound in center of OBJ
TRP 8	Western Guard Tower
TRP 9	Large Mound side of west of OBJ







# Counter-Attack

TDG

## Output Required

You have 25 minutes; gather your platoon leadership to devise a plan. Focus your efforts on clearly understanding the weapon systems you have at your disposal and properly echeloning fires. Use the predesignated phase lines and TRPs to assist you in your direct and indirect fires plan. (HINT: Think “triggers.”) Then use the operations graphic below to draw your concept of the operation. Prepare a brief FRAGORD for your platoon. Include your analysis of enemy disposition, re-stated mission statement, a concept statement, and the rationale for your plan.

### **A Few Leader Questions to Consider:**

1. What weapon systems does the enemy have to bring to bear? What are their capabilities?
2. How does this inform your probable line of contact (PLOC)?
3. What does that PLOC mean for your dismount operations? Your echelonment of fires?
4. What weapon systems do you have in your organic and attached forces?
5. How are you arrayed at the end-state? Are you ready for a counter-attack?





# The Company Leader

TDG

The Company Leader is an online professional forum dedicated to furthering the profession of arms through discussion, writing, and practical tools.

To learn more, go to

<http://companyleader.themilitaryleader.com>

Subscribe through the website or at

<https://tinyurl.com/y8gphyz6> and receive the free resource: *A Deeper Look at the Army Leader Requirements Model*

Follow The Company Leader on Twitter, Facebook, and Instagram @thecompanyldr

